

entech Srl

Engineering & Technology



Entech was founded in 1997 with its Headquarter in Sassuolo (MO), where the main Ceramic Cluster in Italy is located and it started to develop its Technology in Raw-Material and Granules process, mainly operating in the Ceramic field . In the years it began expanding its activity in others sectors such as Mining, Cement, Adhesive, Detergents and Glass. The constant development of the technology, the considerable quality level of the Machinery, the flexibility to the Customer needs, the consolidated experience, the different application and different typology of plants combined with the unceasing research of the process optimization , make ENTECH one of the most expert and competitive Company operating in the market nowadays. Company operating in the market nowadays.

One Team of expert engineers develops the projects , starting from the the Lay-out study and its relative definition ,they analyze the different process steps and then they provide with the installation and the final start-up of one single Machinery or very complex Systems

Entech S.r.l.

Via Madrid, 10 - 41049 Sassuolo (Modena) - Italy

Tel. +39 0536 808221 - Fax +39 0536 808277

www.entech.it - entech@entech.it



CEMENT INDUSTRY



CHEMICAL FIELD

Wall Paintings

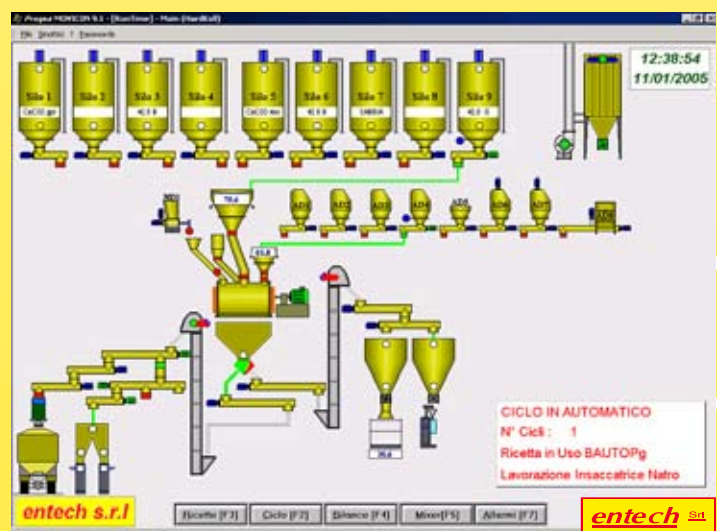


Polymers



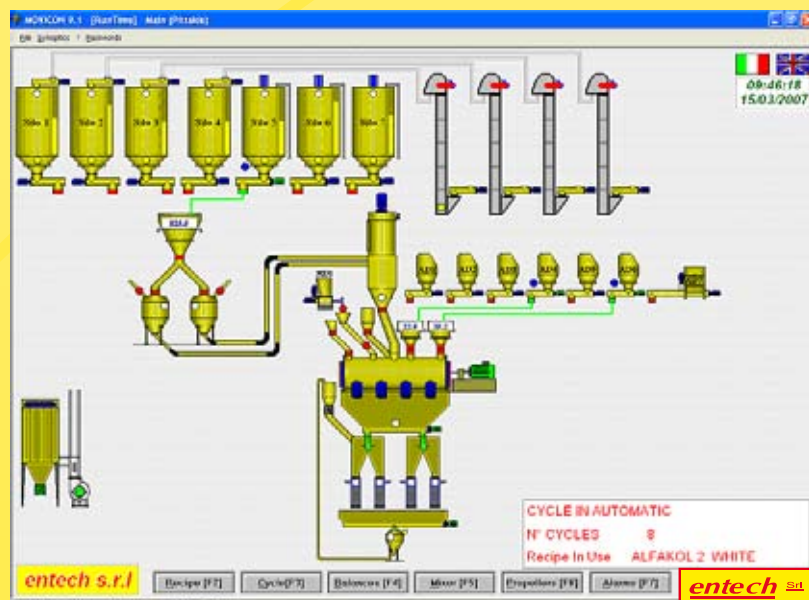
PREMIXED PLASTERS ADHESIVE FIELD

Storage extraction, weighing, mixing and bagging adhesives and plasters



PREMIXED PLASTERS ADHESIVE FIELD

Storage extraction, weighing, mixing and bagging
premixed



MINING FIELD

Sand drying and static classification



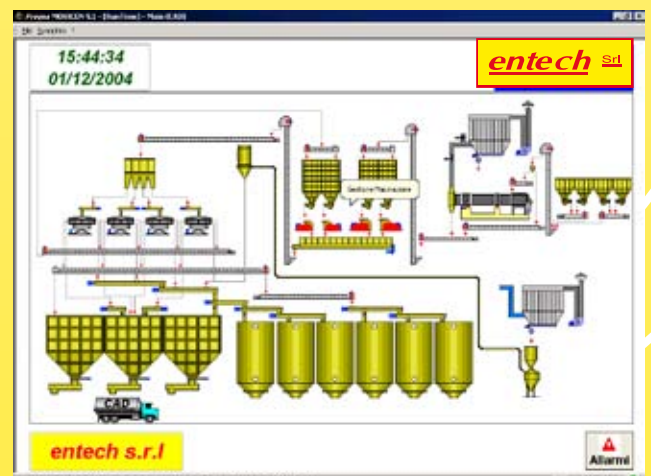
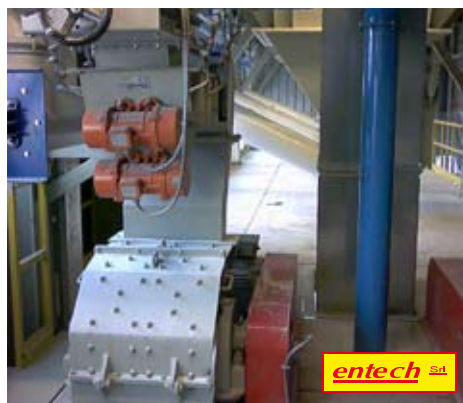
MINING FIELD

Calcium carbonate drying grinding and dynamic classification



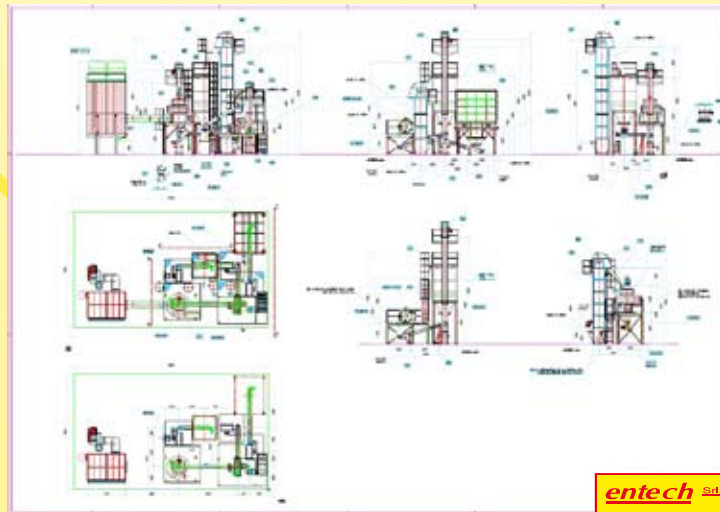
MINING FIELD

Calcium carbonate drying grinding and static classification



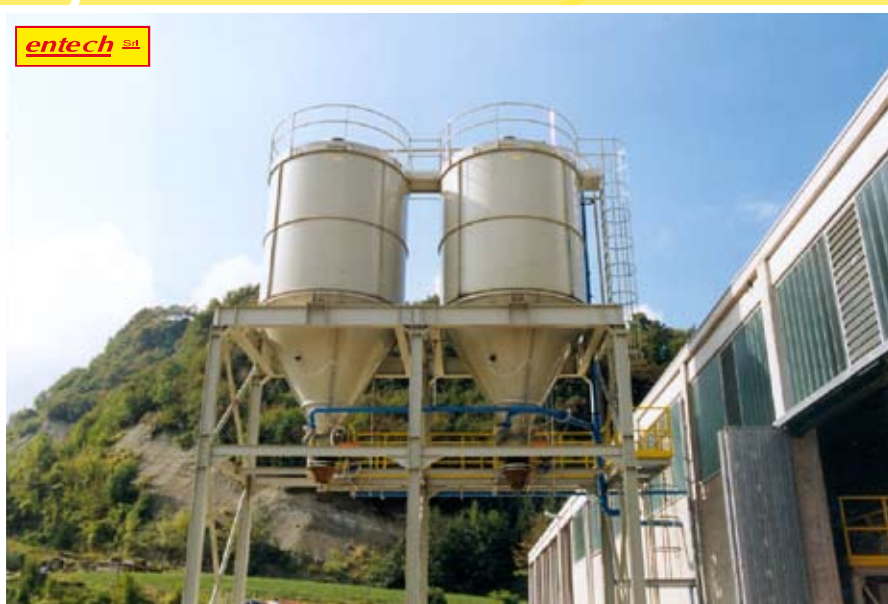
MINING FIELD

Kaolin grinding and dynamic classification



MINING FIELD

Chromite grinding and dynamic classification



MINING FIELD

Feldspar and quartz grinding and dynamic classification



MINING FIELD

Feldspar and quartz grinding and static classification



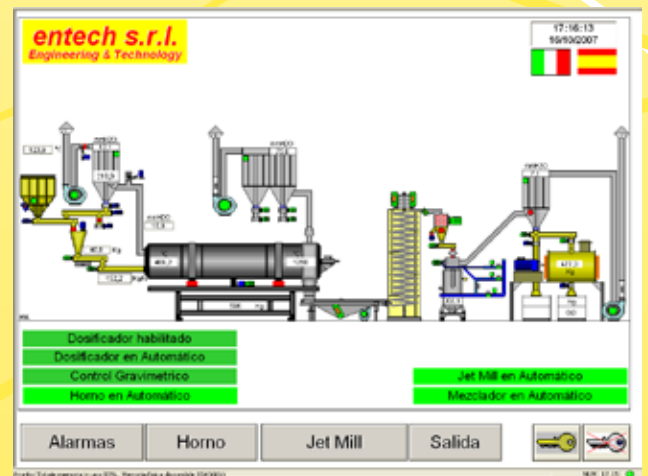
GLASS FIELD

Drying - classification and glass grinding



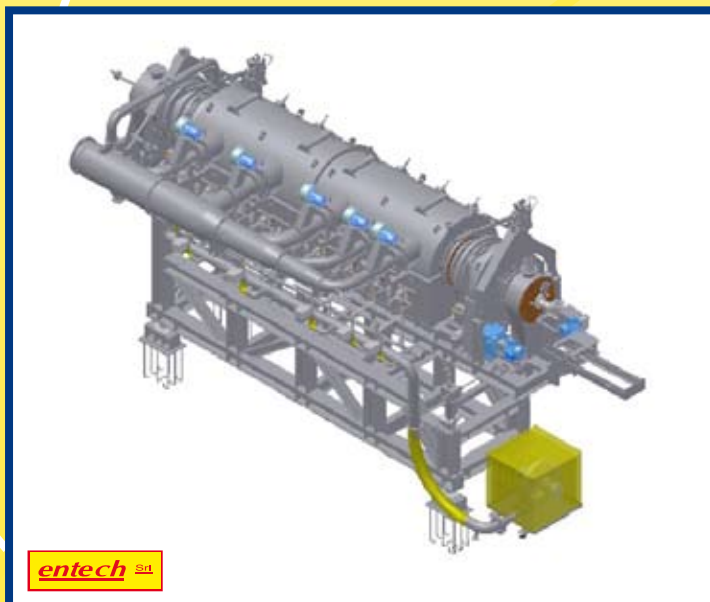
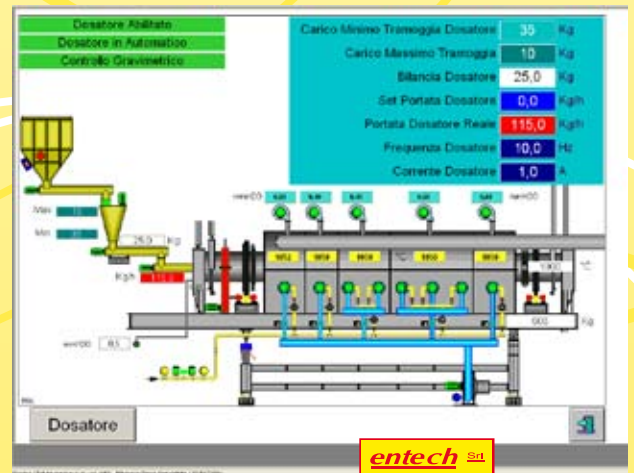
COLOUR CERAMIC INDUSTRIES

Direct flame stain calcination



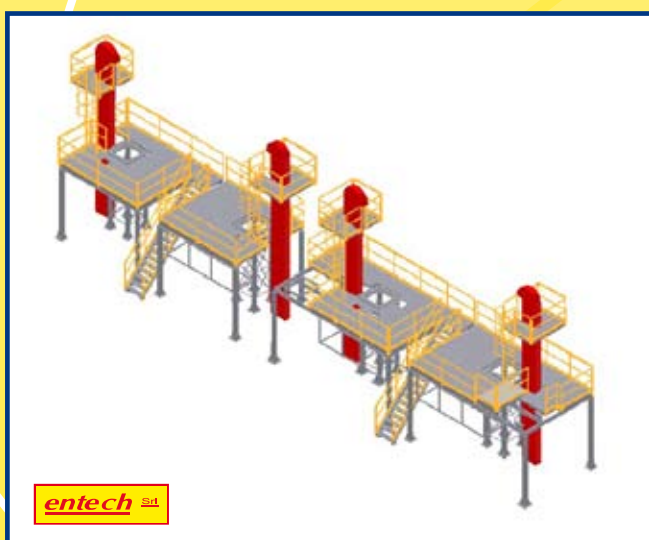
COLOUR CERAMIC INDUSTRIES

Indirect flame stain calcination



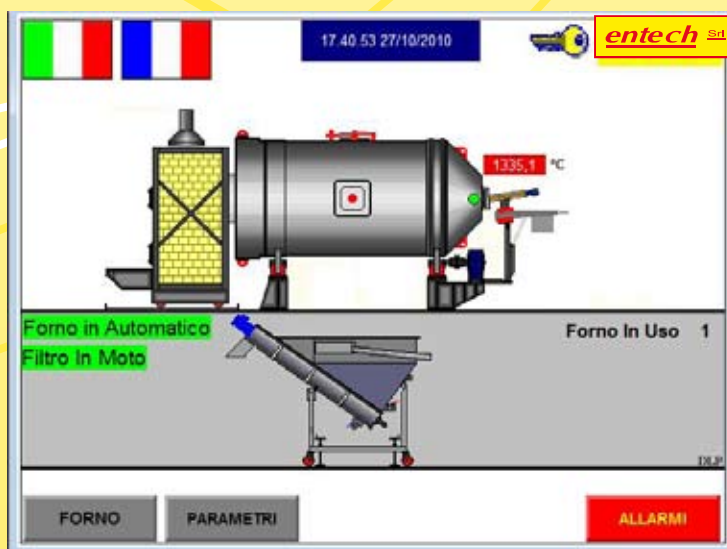
COLOUR CERAMIC INDUSTRIES

Frit classification



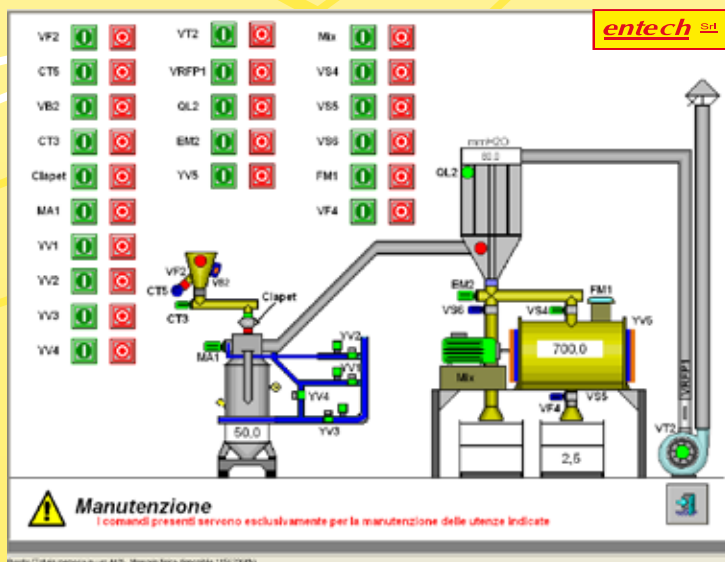
COLOUR CERAMIC INDUSTRIES

Frit melting



COLOUR CERAMIC INDUSTRIES

Stains grinding



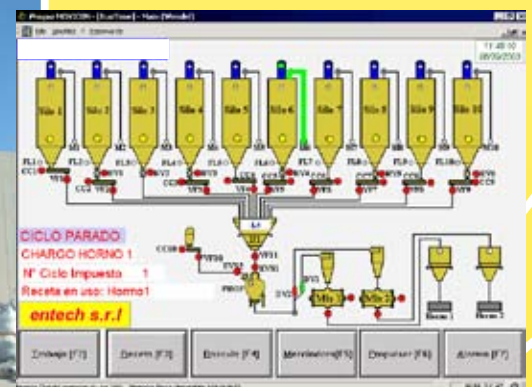
COLOUR CERAMIC INDUSTRIES

Stains mixing



COLOUR CERAMIC INDUSTRIES

Raw materials preparation and frit mixing



COLOUR CERAMIC INDUSTRIES

Glaze preparation



TILE CERAMIC FIELD

Raw materials feeding



TILE CERAMIC FIELD

Press feeding



TILE CERAMIC FIELD

Raw materials iron removing



Spray dryer extraction



TILE CERAMIC FIELD

Slurry Storage



TILE CERAMIC FIELD

Continuous mill loading and storage



entech Srl

Engineering & Technology

***entech* Srl**



Via Madrid, 10 - 41049 Sassuolo (Modena) - Italy
Tel. +39 0536 808221 - Fax +39 0536 808277
www.entech.it - entech@entech.it

